



Carbodox™ Insecticide

Key Industries Ltd

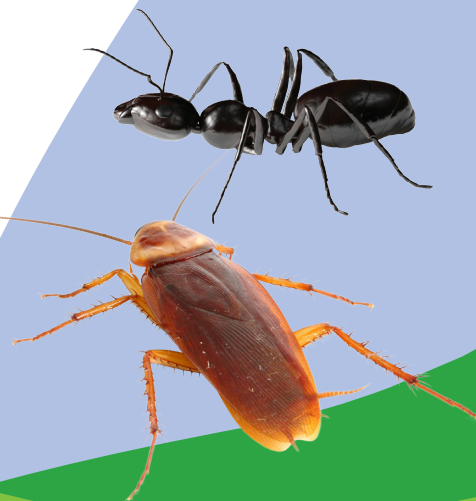
3/44L Constellation Drive PO Box 65070,
Mairangi Bay, Auckland 0754

Tel 09 917 1791 0800 539 463 Fax 09 917 1793

Email sales@keyindustries.co.nz

Web www.keyindustries.co.nz

Carbodox™ Insecticide



www.keyindustries.co.nz

 **ALWAYS READ THE LABEL BEFORE USE**

Carbodox™

Active ingredient 50g/L Indoxcarb
Formulation Suspension concentrate
Pack size 1 Litre

GENERAL INFORMATION

- Carbodox is a non-repellent residual spray for control of Ants and Cockroaches in and around houses, flats, factories, shops, warehouses, restaurants, meat and dairy processing plants.
- Following an application of Carbodox it may take several hours before an effect is observed. Mortality may take up to 24 hours.
- Length of protection depends on many factors such as the nature of the surface being treated and environmental conditions.
- Use a new or decontaminated sprayer. Any sprayer contamination from repellent insecticides will negate the non-repellent action of Carbodox.
- Carbodox can be used in conjunction with a baiting programme. Apply Carbodox first and place bait on the treated surface.

Features	Benefits
Non repellent formulation	Ants and cockroaches don't know it's there
Suspension concentrate	Easy to measure and mix into suspension
No flushing effect or fast knockdown	Insects are not repelled from the spray area
Works within 24 hours	Allows time for contact with other non-treated insects for greater control



Directions for use

Carbodox must be secured or under the personal control of an approved handler at all times.

Maximum length of residual control is obtained under indoor and/or sheltered outdoor conditions.

Nuisance Ant control

- Use 50ml or 100ml in 5 litres of water per 100m².
- Use the high rate for heavy infestations and for maximum residual activity.
- Use the low rate for maintenance situations or to control light infestations.
- Apply to areas where ants are active.
- Use Anteater™ Ant gel for areas where spraying is not suitable. e.g. around electrical equipment and power points.
- Where possible apply directly on and around ant nests and trails.

Cockroach control

- Use 50ml or 100ml in 5 litres of water per 100m².
- Use the high rate for heavy infestations and for maximum residual activity.
- Use the low rate for maintenance situations or to control light infestations.
- Spray cracks and crevices where cockroaches are known to be hiding. A barrier spray around heavy infestations and around the perimeter of rooms is recommended.
- A perimeter spray around buildings will help control outdoor cockroach species.
- Use Enforce™ cockroach gel for areas where spraying is not suitable. e.g. around electrical equipment and power points.

For full instructions on use and safety consult the label and SDS.

